

# Highway 1416 Sanitary Sewer – Construction Update

05/15/2025

**Project Summary:** Upsize the sanitary sewer line from about Cottonwood Ave to West Gate Rd in the Highway 1416 median to support the growth of Box Elder

**Contractor:** H&W Contracting, LLC, Sioux Falls, SD  
John Rennich , 605.339.8834

**Engineer:** KLJ Engineering, Rapid City, SD  
Tim Hartman, 605.872.5004

## May 19 to May 24:

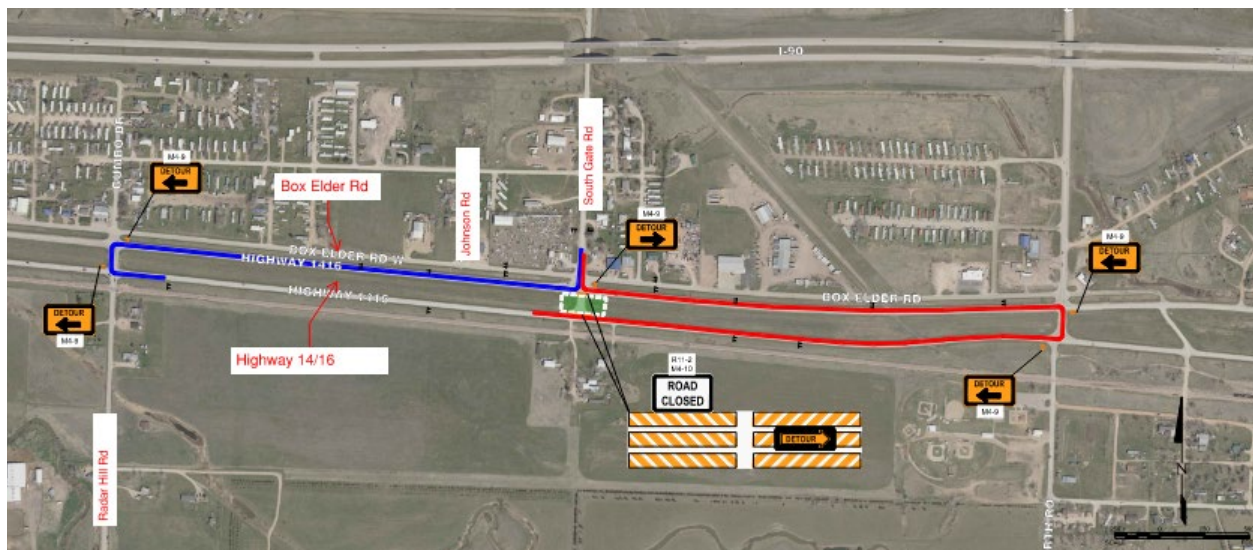
- Work continues in the Highway 1416 median, continuing West nearing the South Gate Road Intersection.
- Work will include activities next to Highway 1416, but all lanes will remain open.
- No road closures are anticipated during this week.

## May 27 to May 31:

- **Important Note** – South Gate Road and Highway 1416 crossover to be closed tentatively beginning May 27<sup>th</sup> – May 31<sup>st</sup>.
  - A detour from use of the crossover will be established as follows (see map below);
    - Westbound traffic to proceed East on Highway 14/16 and turn back West at S Ellsworth Rd.
    - Eastbound traffic proceed West on Highway 14/16 and turn back East at Radar Hill Road. closure, expect a gravel “patch”.
- This detour and work will not affect passerby traffic on Highway 14/16.
- Trucks will not be permitted to use Box Elder. Please utilize the detours indicated.

---

## Work Area – May 27<sup>th</sup> to May 31<sup>st</sup>:



**Work Area – May 19<sup>th</sup> to May 24<sup>th</sup>:**

